

CUSTOM WORK POSITIONER

WITH POWERED WINCH

RG-MX500-SS-AC

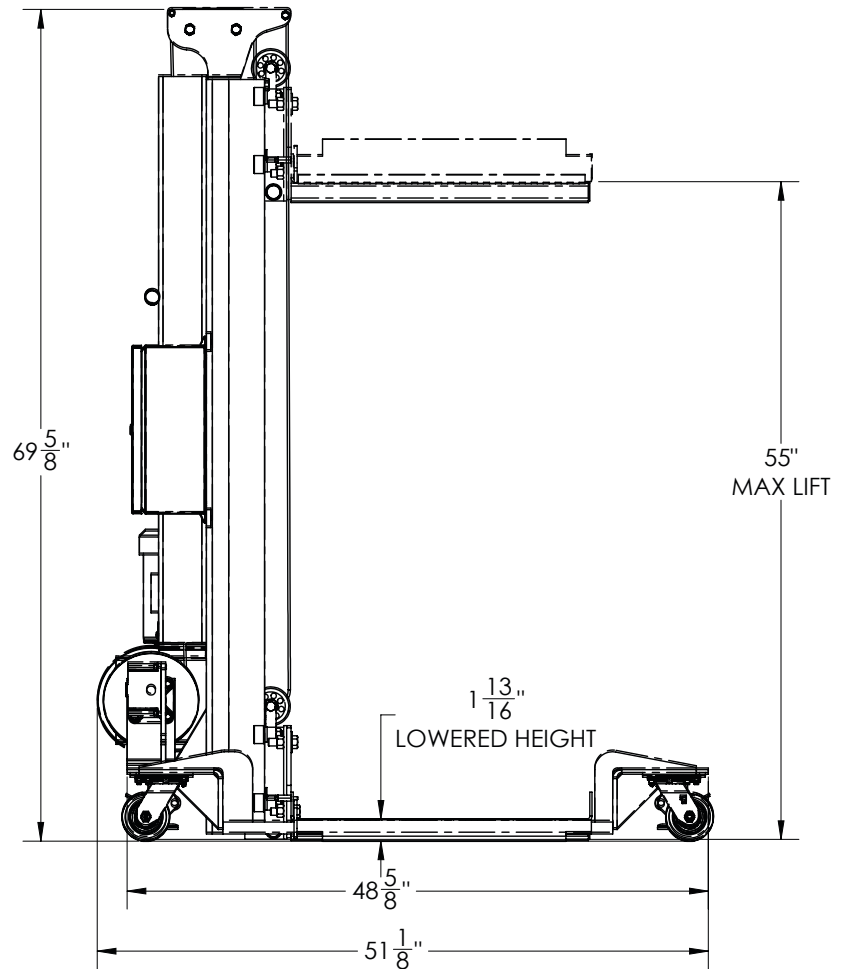
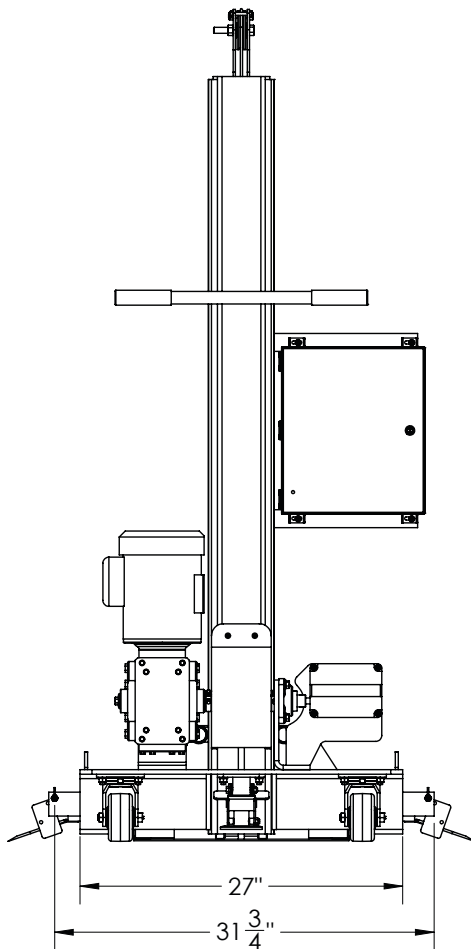
- Stainless steel construction
- 500 lb capacity
- 47.5" lift height
- Bead blast finish



★ **MADE IN THE USA** ★

The David Round Company, Inc.
www.DavidRound.com

Ruger innovatively designs and constructs Stainless Steel Work Positioners that utilize ergonomic features to help workers minimize stooping, stretching, reaching, bending and other repetitive motions that can cause injury and drastically reduce productivity.



FEATURES

- 500 lb capacity
- 304 Stainless steel construction. 316 construction available.
- Available with AC powered winch (Shown), DC powered winch, Manual winch
- Bead blast finish. Polishing options available
- Low profile design makes picking up objects off of the ground easier than ever
- Customizable table sizes
- Locking swivel Anti-microbial wheels
- Stainless steel floor locks

