

# LO-HED LOW-HEADROOM HOIST

**High-performance wire rope hoist delivers exceptional reliability in even the most demanding applications.**

## H-4 Duty Hoist.

### ● Maximize overhead clearance.

*The low-headroom design minimizes beam-to-hook distance.*

- Create additional workspace over assembly bays to accommodate taller equipment designs.
- Reduce bridge crane profiles for restricted height applications in existing buildings.
- Minimize jib crane heights for added clearance under bridge cranes and mezzanines.
- Reduce new construction costs by lowering ceiling heights without sacrificing workspace.

### ● Position loads precisely and reliably for years.

*Protect loads and production machinery from unnecessary contact and damage.*

- True vertical lift operation
- Carefully lower sensitive loads with two-speed flexibility or with programmable inverter controls.
- Increase stopping accuracy and holding force with the standard motor brake and self-adjusting mechanical brake.
- Program upper and lower hook stops with an adjustable rotary limit switch.

### ● Increase overhead security.

*Top-quality components and design features provide operator peace-of-mind.*

- **Specified by the military** because all critical welds are magnetic particle inspected.
- **Relied on by leading steel producers** because the independent mechanical and motor brakes provide backup security in hot melt, rolling and forming applications.
- **Trusted to perform critical lifts** in production environments because the oversized gear train is continually lubricated in a sealed oil bath.



## STANDARD FEATURES:

- Heavy service (H4) hoist
- Low-headroom design
- True-vertical lift (double-reeved)
- Enclosed in-line gear train with oil bath lubrication
- Mechanical load brake
- Electric motor brake
- Emergency upper limit switch
- Reversing controls and pendant
- Thermal overload protection
- Lug mounted
- 220/440 Volts – 60 Hz – 3 Phase

## OPTIONAL FEATURES:

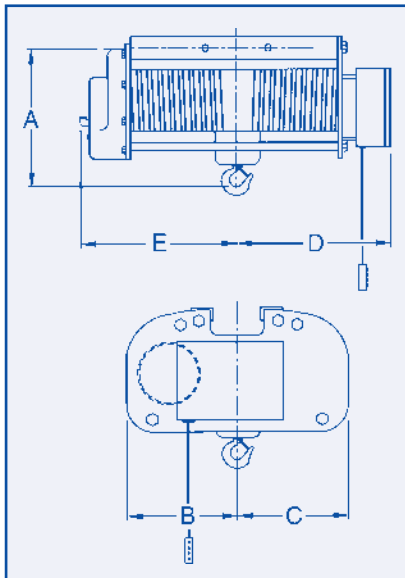
- Air-powered hoists
- Manual and motorized trolleys
- Upper and lower hook position limit switch
- Two-speed, half-speed and variable-speed operation
- Soft-start trolley controls

## Technical Specifications

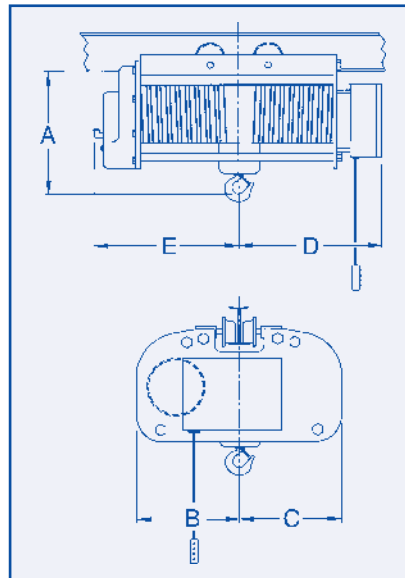
Load Capacity (lbs.)	Model Number	Typical Headroom (in.)	Lift Height (ft.)	Lift Speed (ft./min.)	Flange Width Range		Reference Number
					Min. (in.)	Max. (in.)	
2,000	B1-2D	13-1/2	22	19	4	6	1
	B1-8D	13-1/2	37	19	4	6	2
4,000	B2-2D	13-1/2	22	19	4	6	1
	B2-8D	13-1/2	37	19	4	6	2
6,000	B3-2D	13-1/2	22	19	4	6	1
	B3-8D	13-1/2	37	19	4	6	2
10,000	H5-4D	15-1/2	20	18	4.66	7	3
	H5-8D	15-1/2	40	18	4.66	7	4
16,000	H8-4F	29	12	12	5.5	7	5
	H8-8F	29	25	12	5.5	7	6
20,000	J10-2D	21	29	20	5.5	9	7
	J10-4D	21	56	20	5.5	9	8
30,000	J15-2F	36	19	13	5.5	9	9
	J15-4F	36	34	13	5.5	9	10

Information on other models available from a David Round representative.

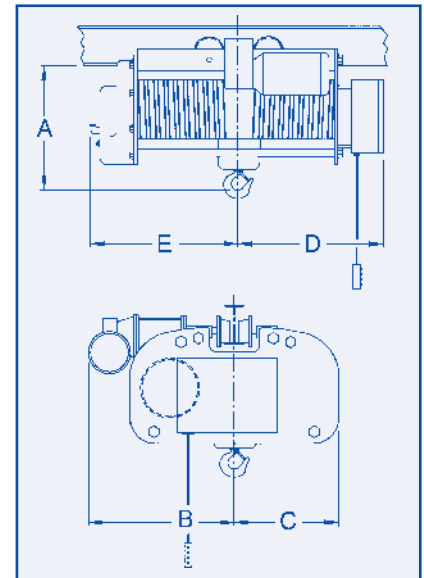
- Hazardous environment upgrades/spark-resistant features
- Weather-resistant finishes and components
- Programmable load limit controller



Lug Mount



Push Trolley



Motorized Trolley

## Dimensions

Reference Number	Mounting									C (in.)	D (in.)	E (in.)
	Lug			Push Trolley			Motorized Trolley					
	Headroom A (in.)	B (in.)	Weight (lbs.)	Headroom A (in.)	B (in.)	Weight (lbs.)	Headroom A (in.)	B (in.)	Weight (lbs.)			
1	16-1/2	16	860	13-1/2	16	925	13-1/2	21-3/8	1,200	16	21-1/4	20-3/4
2	16-1/2	16	960	13-1/2	16	1,025	13-1/2	21-3/8	1,300	16	25-5/8	26-1/8
3	19	18-1/4	1,220	15-1/2	18-1/4	1,340	15-1/2	25	1,500	18-1/4	24-1/8	26-5/8
4	19	18-1/4	1,410	15-1/2	18-1/4	1,530	15-1/2	25	1,875	18-1/4	32-1/2	34
5	32-1/2	18-1/4	1,440	29	18-1/4	1,560	29	25	1,720	18-1/4	24-1/8	26-5/8
6	32-1/2	18-1/4	1,630	29	18-1/4	1,750	29	25	2,095	18-1/4	32-1/2	34
7	26	23-1/2	4,025	21	23-1/2	4,100	21	35	4,350	22-1/2	31-1/2	34-7/8
8	26	23-1/2	4,225	21	23-1/2	4,300	21	35	4,550	22-1/2	40	42-1/4
9	41	23-1/2	4,265	36	23-1/2	4,340	36	35	4,590	22-1/2	31-1/2	34-7/8
10	41	23-1/2	4,465	36	23-1/2	4,540	36	35	4,790	22-1/2	40	42-1/4

Special configurations and designs are available.

THIS EQUIPMENT IS NOT TO BE USED FOR LIFTING OR SUPPORTING PEOPLE.